



**Introduction**

**Opening, Creating, and Saving Files**

**Editor Options Available**

**Technical Specifications**

**Known Bugs**

**License and Warranty Disclaimer**

## Introduction

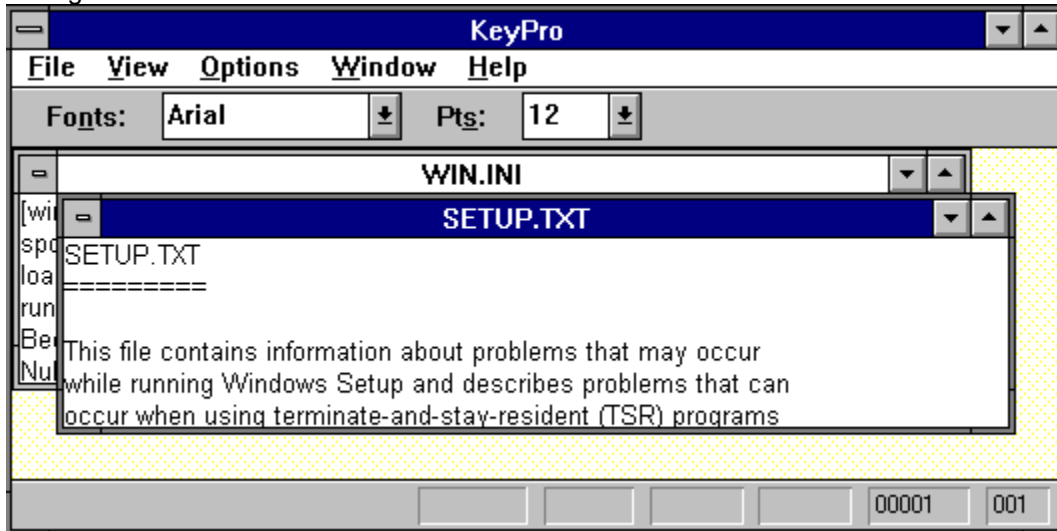
KeyPro is a text file editor for MS-Windows 3.1 that includes the following features:

- The display of text in any desired Windows font
- Unlimited file size capacity (except by the hardware)
- Custom tab settings
- Text and background color options
- Toolbar which includes a font control and a point size control
- Status bar which includes a line and column number display
- Horizontal and vertical scrolling via scroll bars, PAGE UP/DOWN keys, or arrow keys
- General text editing functions:
  - Line insertion via the ENTER key
  - Line deletion via the BACKSPACE key
  - Character Deletion via the BACKSPACE or DEL key
  - Character insertion
  - Moving to the beginning of a line via HOME
  - Moving to the beginning of a line via END
  - Caret positioning via the mouse and the arrow keys
- Online help
- Automatic scrolling to a specified line via the Line dialog box
- The Save All command to save all files
- Automatic Ask Before Save (optional)

see [The KeyPro Interface](#)

## The KeyPro Interface

For information on a command, click the appropriate submenu in the diagram below and select the corresponding command.



## Opening, Creating, and Saving Files

Opening, creating, and saving files is the same as in *Windows Notepad*. Selecting **File/New** will create a brand new file. Select **File/Open** to open an existing file. Select **File/Save** to save a file and **File/Save As** to save a file using a new name. **File/Close** is the equivalent of clicking on the minus button of the active child window.

KeyPro can load files of any size provided there is enough system memory available. If a file is opened that is too large to load into system memory, KeyPro will display the message

**Not enough memory to open file. Please exit one or more applications and try again.**

When a file has more than 32,767 lines, the file is truncated down to 32,767 lines in order to accommodate Windows' scroll bar range limit of 32,767. In this case, KeyPro displays the following message:

**Cannot open the file because the number of lines exceeds Windows' scroll bar range limit of 32,767.**

At this point the truncated version of the file will be loaded and displayed. The user may then proceed to edit this truncated version of the file if desired, or else abandon the operation by closing this truncated version of the file without saving it.

Opening large files can sometimes take a bit long. Files with more than 1000 lines can take 5 seconds or more to load on a 386 SX computer.

When closing a file that has been changed after opening, KeyPro will automatically prompt the user whether to save that file (that is, provided that the Ask Before Save option is checked in the Environment dialog box: this is the initial setting.) Otherwise, saving must be done by selecting Save or Save As from the File menu.

The maximum number of characters per line is 251. Lines with more than this are truncated down to 251 characters, and the extra characters on the line are automatically discarded. All tab characters are kept and expanded according to the tab stop value setting in the Environment dialog box.

## Editor Options Available

### *Environment Options:*

|                          |  |
|--------------------------|--|
| <b>Tab Stops</b>         | Determines the length of tabs (or the number of space characters per tab)  |
| <b>Horizontal Scroll</b> | Shows the horizontal scroll bar for each child window.   |
| <b>Vertical Scroll</b>   | Shows the vertical scroll bar for each child window.   |
| <b>Ask Before Save</b>   | Determines whether <i>KeyPro</i> prompts you on whether to save a file whenever you attempt to close a file that has been changed after it was opened. |

The tab stop length, scroll bar states (hidden or shown), and prompting before closing are controlled via the settings in the Environment dialog box. The valid tab stop value range is from 1 to 32. This value determines the number of space characters that a tab consists of. The scroll bar states for the horizontal and vertical scroll bars are visible if the corresponding scroll bar item is checked and hidden if otherwise. The Ask Before Save option automatically prompts the user whether to save a file whenever the user attempts to close a file that has been changed.

### *Color Options:*

Using the **Color** dialog box, the foreground and background color for the child windows can be selected. The **Item** box specifies which object the colors will be applied to. For KeyPro 1.0, **text** is the only item available.

### *Font Options:*

Using the **Font** dialog box, the font for displaying text can be selected.

## Technical Specifications

|   |   |
|---|---|
| <b>File Size Limit</b>                            | None.   |
| <b>Max. Characters/Line</b>                       | Lines greater than 251 characters are truncated to 251 characters. KeyPro prompts the user for each such line.                          |
| <b>Max. Number of Lines/File</b>                  | Files with more than 32,767 lines will cause the scroll bar to function improperly. In this case the file is truncated to 32,767 lines. |
| <b>Max. Num. of Opened Files</b>                  | The maximum number of opened files is determined by the Operating System.   |
| <b>Line Truncations</b>                           | All lines are truncated after the last non-space character whenever a file is saved.  |
| <b>Available Fonts</b>                            | All <i>Windows</i> fonts.   |
| <b>Hardware and Operating System Requirements</b> | KeyPro requires an 80286 IBM compatible or above computer and MS-DOS 4.0 and MS-Windows 3.1 or above operating systems.                 |

**New**

**Open**

**Close**

**Save**

**Save As**

**Save All**

**Exit** (quits KeyPro)





**Line**

-----

**Toolbar**

**Status Bar**

**Tile**  
**Cascade**  
**New**

**Environment...**  
**Colors...**  
**Font...**

**Contents**  
**Search**

-----

**About**

Scrolls the screen to the specified line.

**Toolbar**

The toolbar displays the font and point size controls. The toolbar can be hidden or shown by selecting **Toolbar** from the **View** menu.

**Status Bar**

The status bar displays the caret position (line and column numbers) for the active child window. These are shown in the two rightmost boxes. The rest of the boxes on the status bar are not used. The status bar can be shown or hidden by selecting **Status Bar** from the **View** menu.

**Tile**

Rearranges child windows in a tiled, non-overlapping configuration.



**Cascade**

Rearranges child windows in a cascaded, one-on-top-of-another configuration.

**New**

Creates a new extra window for the file associated with the currently active child window.

**Contents**

Invokes *Windows Help* and displays the Table of Contents.

**Search**

Invokes *Windows Help* and displays the **Search** dialog box.

**About *KeyPro***

*KeyPro* Text Editor

Version 1.00

Copyright © 1993 Eric Grass



## Known Bugs

When the same file is being displayed in two different child windows and a change is made in one of the windows, the change cannot be seen (immediately) in the other window until it is repainted by Windows (that is, the changed text in the other window is invisible). Windows repaints a window whenever the window is scrolled or is resized. It is therefore advisable when changing a window that has a "twin" that the user periodically scrolls the other twin window up/down a page and back in order to see the changes.

The point size values listed for font selection may not be exact. The formula that KeyPro uses to calculate point sizes is:

$$\# \text{ points} = \frac{\text{font height in pixels} (72 \text{ points/inch})}{\# \text{ pixels/inch for given computer}}$$

## **License Agreement**

You are free to use and distribute KeyPro provided that no fee is charged for copying, distribution, or use, and that it is unmodified and distributed with all of its original accompanying files and documentation.

## **Warranty Disclaimer**

Eric Grass disclaims all warranties, express or implied, including but not limited to warranty of merchantability or fitness for a particular purpose, and will not be liable for any damages resulting from the use of this software. Use this software at your own risk.

## **Copyright**

KeyPro is copyrighted (c) 1993 by Eric Grass.

For more information, comments, or critiques concerning KeyPro, contact:

Eric Grass  
1612 Gettysburg Landing  
St. Charles, MO 63303  
(314) 928-7803

Internet: [s876795@umslvma.umsl.edu](mailto:s876795@umslvma.umsl.edu)



